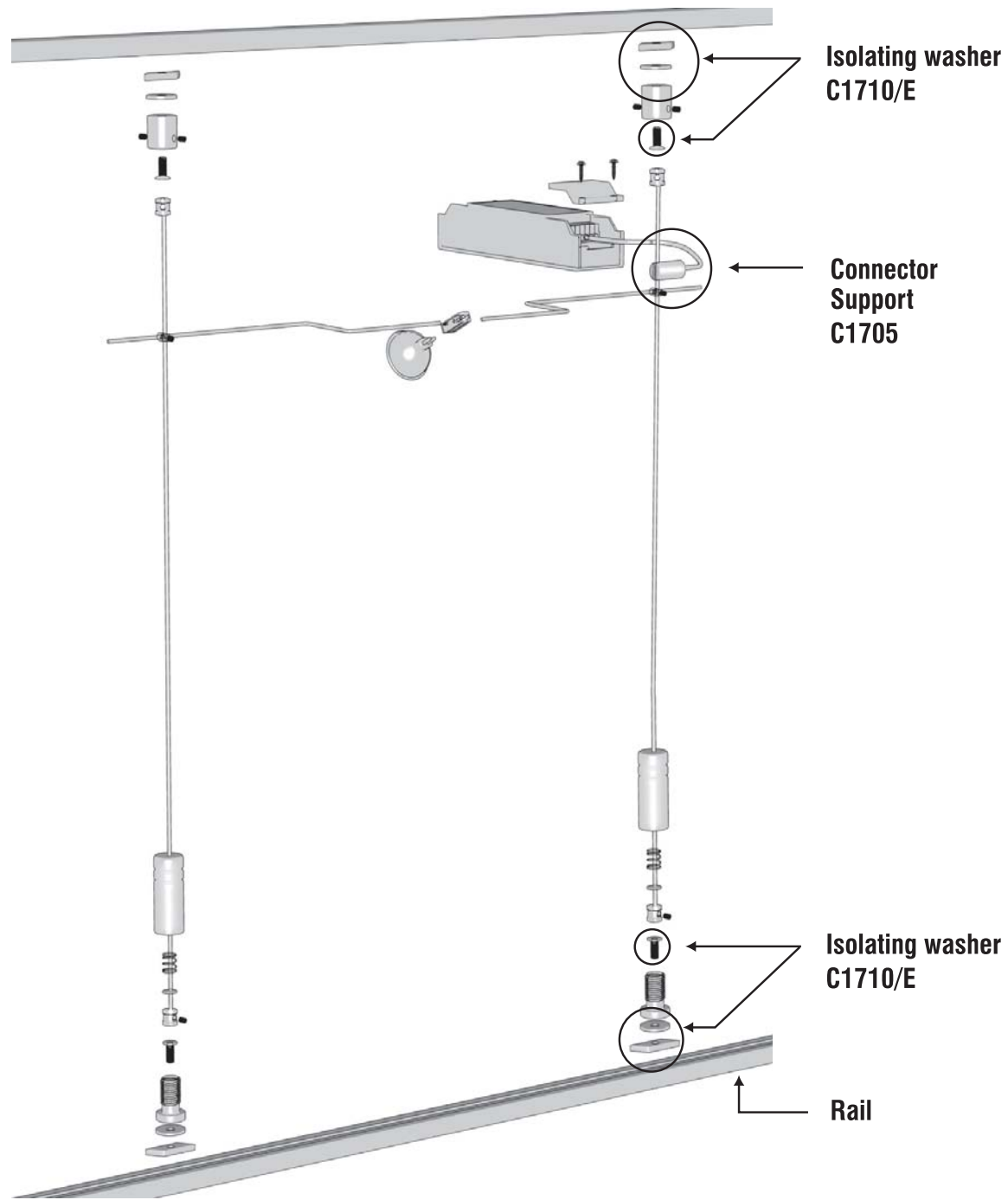


> LAMP



ASSEMBLY INSTRUCTIONS LAMP

Common cable installation : - impérative 20 W lamp
- maximum of 5 lamps per transformer

Separated cable installation : - impérative 20 W lamp
- maximum of 3 lamps per transformer

The additional power of the lamps must not exceed the power of the transformer.

No more than 60 W on 1 cable or 1 rod.