

> TIGE 10 MM / 10 MM ROD COMPONENTS



R0100

KIT POUR FIXATION SOL-PLAFOND
- Fixation haute Ø 24,5 mm
- Fixation basse avec tendeur

(Clé Allen et vis fournies avec le Kit)

FLOOR / CEILING FIXING KIT
- 24,5 mm Ø top fixing
- Floor anchor with adjusting sleeve

(Allen key and fixing screws supplied)



R0500

L. 0,5 M / TIGE INOXYDABLE DE FINITION
- 1 Bout arrondi

L. 0,5 M / STAINLESS STEEL ROD FINISH
- 1 Rounded end

R0501

L. 1 M / TIGE INOXYDABLE
- Filetée et taraudée

L. 1 M / STAINLESS STEEL ROD
- threaded ends

R0502

L. 1,5 M / TIGE INOXYDABLE
- Filetée et taraudée

L. 1,5 M / STAINLESS STEEL ROD
- threaded ends



R0405

EMBOUT DE TIGE
- Finition nickelée

FINISHING END CAP
- Nickel-plated finish



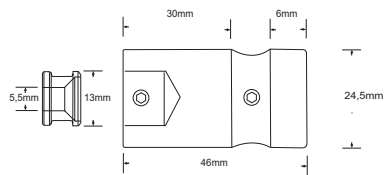
Kits livrés sans tige inox
Kits delivered without stainless steel rod

> TIGE 10 MM / 10 MM ROD COMPONENTS



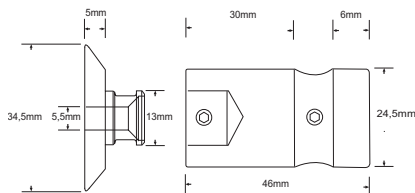
R0104

FIXATION MURALE SANS PLATINE
WALL FIXING WITHOUT PLATE



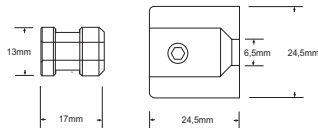
R0105

FIXATION MURALE AVEC PLATINE
WALL FIXING WITH PLATE



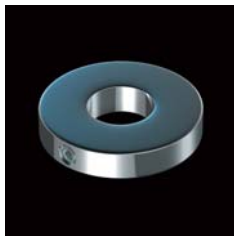
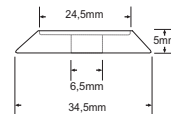
R0101

FIXATION HAUTE AVEC BAGUE FILETÉE
TOP FIXING WITH THREADED RING



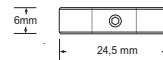
R0702

PLATINE DE FINITION
FINISHING PLATE



R0712

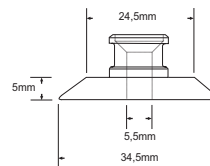
DISQUE CACHE-PLAFOND
CEILING SHIELD



R0703

PLATINE DE FINITION AVEC TÊTE
- Compatible pour référence **2520**
- Ø 34,5 mm

FINISHING PLATE WITH HEAD
- Compatible with reference **2520**
- 34,5 mm Ø



> TIGE 10 MM / 10 MM ROD COMPONENTS

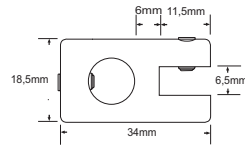
6 mm



R0201

SUPPORT POUR PANNEAU JUSQU'A 6 mm

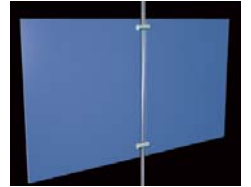
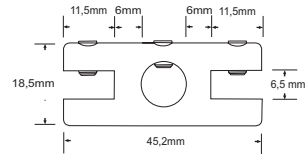
PANEL SUPPORT FOR UP TO 6 mm



R0203

SUPPORT DOUBLE POUR PANNEAU JUSQU'A 6 mm

TWIN PANEL SUPPORT FOR UP TO 6 mm



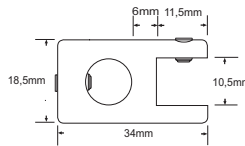
10 mm



R0202

SUPPORT POUR PANNEAU JUSQU'A 10 mm

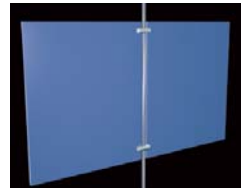
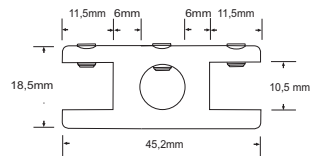
PANEL SUPPORT FOR UP TO 10 mm



R0204

SUPPORT DOUBLE POUR PANNEAU JUSQU'A 10 mm

TWIN PANEL SUPPORT FOR UP TO 10 mm



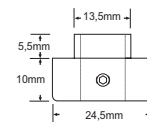
> TIGE 10 MM / 10 MM ROD COMPONENTS



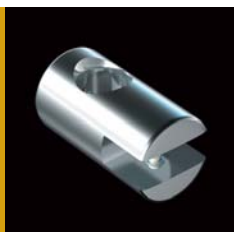
R0300

SUPPORT POUR TABLETTE PERCÉE / PERÇAGE Ø 14 mm

PIERCED SHELF SUPPORT / 14 mm Ø HOLE FIX



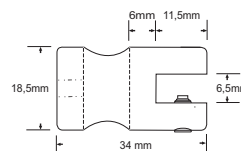
6 mm



R0301

SUPPORT POUR TABLETTE JUSQU'À 6 mm

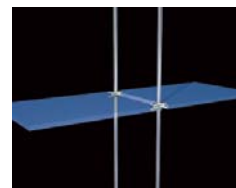
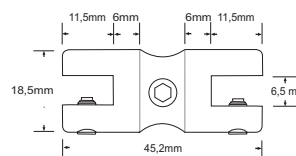
SHELF SUPPORT FOR UP TO 6 mm



R0303

SUPPORT DOUBLE POUR TABLETTE JUSQU'À 6 mm

TWIN SHELF SUPPORT FOR UP TO 6 mm



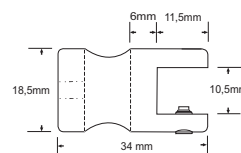
10 mm



R0302

SUPPORT POUR TABLETTE JUSQU'À 10 mm

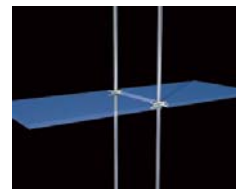
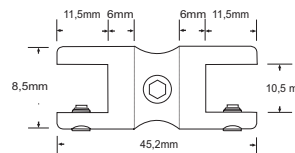
SHELF SUPPORT FOR UP TO 10 mm



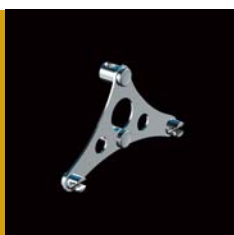
R0304

SUPPORT DOUBLE POUR TABLETTE JUSQU'À 10 mm

TWIN SHELF SUPPORT FOR UP TO 10 mm



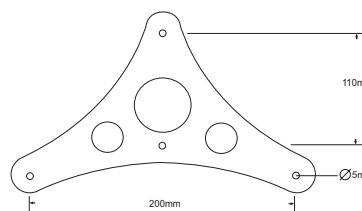
8 mm



R0306

CONSOLE POUR TABLETTE JUSQU'À 8 mm
- Finition Aluminium brossé / épaisseur 2 mm

SHELF CONSOLE FOR UP TO 8 mm
- Brushed Aluminium finish / 2 mm thickness



> TIGE 10 MM / 10 MM ROD COMPONENTS

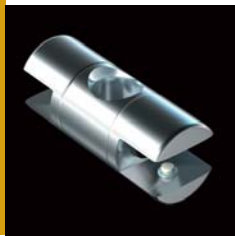
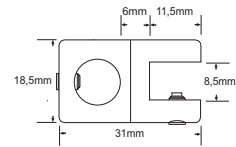
8 mm



R0600

SUPPORT ORIENTABLE POUR LUTRIN, PANNEAU ET TABLETTE JUSQU'À 8 mm

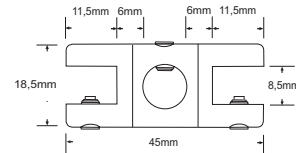
SWIVEL LECTURN, PANEL AND SHELF SUPPORT FOR UP TO 8 mm



R0601

SUPPORT DOUBLE ORIENTABLE POUR LUTRIN, PANNEAU ET TABLETTE JUSQU'À 8 mm

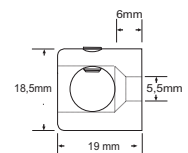
TWIN SWIVEL LECTURN, PANEL AND SHELF SUPPORT FOR UP TO 8 mm



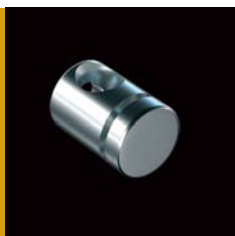
R0400

SUPPORT DE CADRE

FRAME SUPPORT



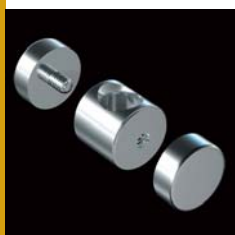
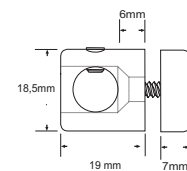
de 4 à 6 mm



R0407

SUPPORT POUR PANNEAU PERCE / PERÇAGE Ø 5 mm

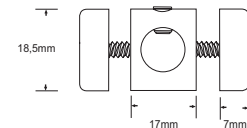
PIERCED PANEL SUPPORT / 5 mm Ø HOLE FIX



R0409

SUPPORT DOUBLE POUR PANNEAU PERCE PERÇAGE Ø 5 mm

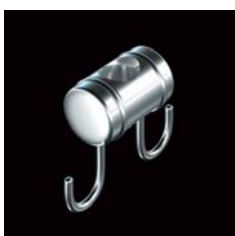
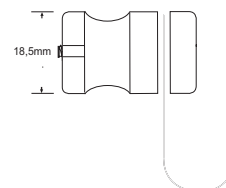
TWIN PIERCED PANEL SUPPORT 5 mm Ø HOLE FIX



R0403

SUPPORT CROCHET INOX

HOOK SUPPORT



R0408

SUPPORT DOUBLE CROCHET INOX

TWIN HOOK SUPPORT

