

> TIGE 6 MM / 6 MM ROD COMPONENTS



R6100

KIT POUR FIXATION SOL-PLAFOND

- Fixation haute Ø 18,5 mm
- Fixation basse avec tendeur

(Clé Allen et vis fournies avec le Kit)

FLOOR / CEILING FIXING KIT

- 18,5 mm Ø top fixing
- Floor anchor with adjusting sleeve

(Allen key and fixing screws supplied)



R6103

KIT POUR PANNEAU SUSPENDU

- JUSQU'À 6 mm
- Fixation haute Ø 18,5 mm
- Support suspendu pour panneau jusqu'à 6 mm

(Clé Allen et vis fournies avec le Kit)

SUSPENSION PANEL KIT FOR UP TO 6 mm

- 18,5 mm Ø top fixing
- Suspension support for panel up to 6 mm

(Allen key and fixing screws supplied)



Kits livrés sans tige inox
Kits delivered without stainless steel rod

> TIGE 6 MM / 6 MM ROD COMPONENTS



R6102

KIT PIVOT AVEC PLATINE
 - Platine Ø 34,5 mm
 - Fixation haute à pivot Ø 18,5 mm
 - Fixation basse à pivot avec tendeur
 - Projection 32 mm

(Clé Allen et vis fournies avec le Kit)

WALL MOUNTED SWIVEL KIT WITH PLATE

- Plate 34,5 mm Ø
 - Top swivel fixing 18,5 mm Ø
 - Lower swivel fixing with adjusting sleeve
 - 32 mm projection

(Allen key and fixing screws supplied)



R6500

L. 0,5 M / TIGE INOXYDABLE DE FINITION
 - 1 Bout arrondi

L. 0,5 M / STAINLESS STEEL ROD FINISH
 - 1 Rounded end

R6501

L. 1 M / TIGE INOXYDABLE
 - Filetée et taraudée

L. 1 M / STAINLESS STEEL ROD
 - threaded ends

R6502

L. 1,5 M / TIGE INOXYDABLE
 - Filetée et taraudée

L. 1,5 M / STAINLESS STEEL ROD
 - threaded ends



R6405

EMBOUT DE TIGE
 - Finition nickelée

FINISHING END CAP
 - Nickel-plated finish



R6109

KIT PIVOT SANS PLATINE
 Montage modulable sur rail

WALL MOUNTED SWIVEL KIT WITHOUT PLATES
 Modular assembly on rail



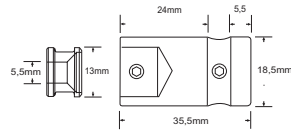
> TIGE 6 MM / 6 MM ROD COMPONENTS



R6104

FIXATION MURALE SANS PLATINE

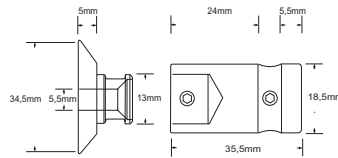
WALL FIXING WITHOUT PLATE



R6105

FIXATION MURALE AVEC PLATINE

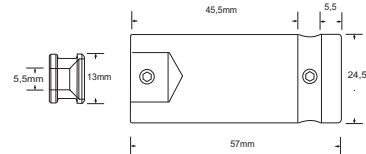
WALL FIXING WITH PLATE



R6110

FIXATION MURALE LONGUE SANS PLATINE

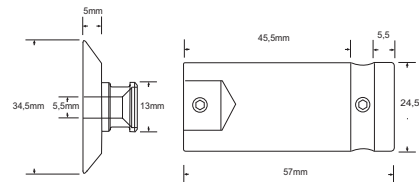
LONG WALL FIXING WITHOUT PLATE



R6111

FIXATION MURALE LONGUE AVEC PLATINE

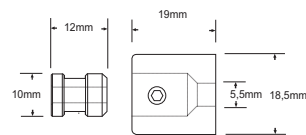
LONG WALL FIXING WITH PLATE



R6101

FIXATION PLAFOND AVEC BAGUE FILETÉE

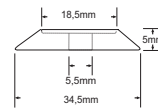
TOP FIXING WITH THREADED RING



C1702

PLATINE DE FINITION

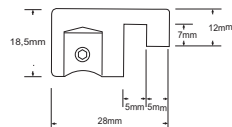
FINISHING PLATE



R6406

FIXATION HAUTE POUR TRAVERSES OU CIMAISES AVEC BAGUE FILETÉE

TOP FIXING FOR OVERHEAD RAIL OR CROSS BAR WITH THREADED RING



> TIGE 6 MM / 6 MM ROD COMPONENTS

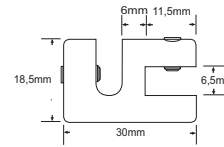
6 mm



R6201

SUPPORT POUR PANNEAU JUSQU'A 6 mm

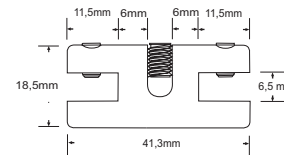
PANEL SUPPORT FOR UP TO 6 mm



R6203

SUPPORT DOUBLE POUR PANNEAU JUSQU'A 6 mm

TWIN PANEL SUPPORT FOR UP TO 6 mm



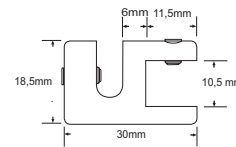
10 mm



R6202

SUPPORT POUR PANNEAU JUSQU'A 10 mm

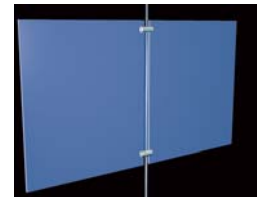
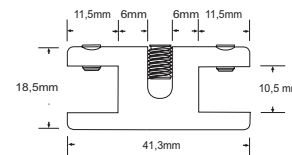
PANEL SUPPORT FOR UP TO 10 mm



R6204

SUPPORT DOUBLE POUR PANNEAU JUSQU'A 10 mm

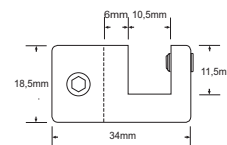
TWIN PANEL SUPPORT FOR UP TO 10 mm



R6401

SUPPORT SUPERIEUR OU INFERIEUR
POUR PANNEAU JUSQU'A 10 mm

PANEL SUPPORT TOP OR BOTTOM
FOR UP TO 10 mm



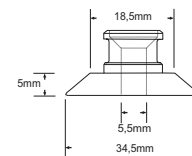
R6703

PLATINE DE FINITION AVEC TÊTE

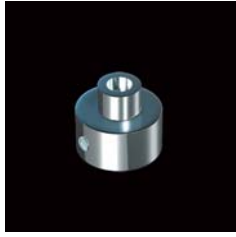
- Compatible pour références **2015** et **2020**
- Ø 34,5 mm

FINISHING PLATE WITH HEAD

- Compatible with reference **2015** and **2020**
- 34,5 mm Ø



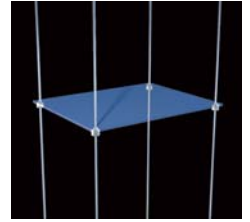
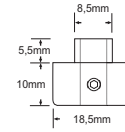
> TIGE 6 MM / 6 MM ROD COMPONENTS



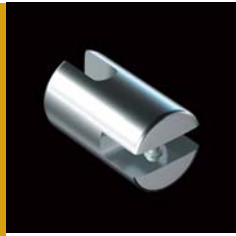
R6300

SUPPORT POUR TABLETTE PERCEE / PERÇAGE Ø 10 mm

PIERCED SHELF SUPPORT / 10 mm Ø HOLE FIX



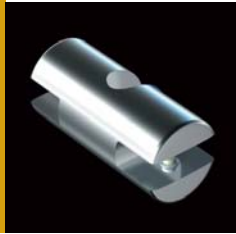
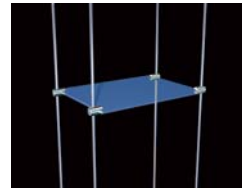
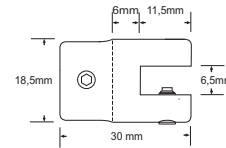
6 mm



R6301

SUPPORT POUR TABLETTE JUSQU'A 6 mm

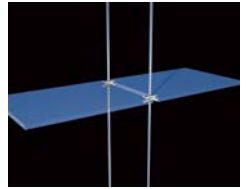
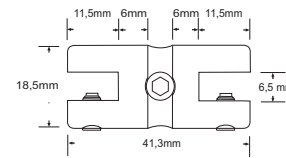
SHELF SUPPORT FOR UP TO 6 mm



R6303

SUPPORT DOUBLE POUR TABLETTE JUSQU'A 6 mm

TWIN SHELF SUPPORT FOR UP TO 6 mm



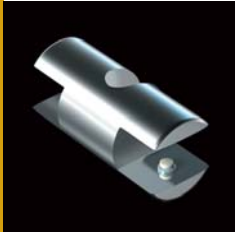
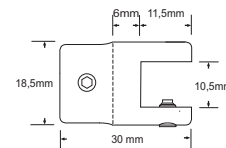
10 mm



R6302

SUPPORT POUR TABLETTE JUSQU'A 10 mm

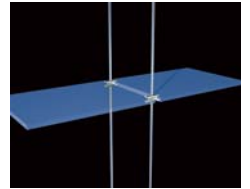
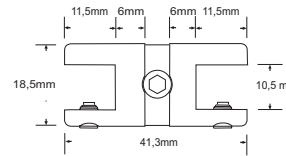
SHELF SUPPORT FOR UP TO 10 mm



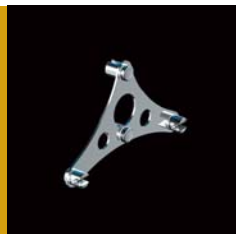
R6304

SUPPORT DOUBLE POUR TABLETTE JUSQU'A 10 mm

TWIN SHELF SUPPORT FOR UP TO 10 mm



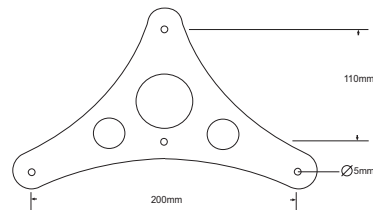
8 mm



R6306

CONSOLE POUR TABLETTE JUSQU'A 8 mm
- Finition Aluminium brossé / épaisseur 2 mm

SHELF CONSOLE FOR UP TO 8 mm
- Brushed Aluminium finish / 2 mm thickness



> TIGE 6 MM / 6 MM ROD COMPONENTS

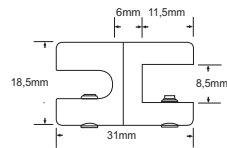
8 mm



R6600

SUPPORT ORIENTABLE POUR LUTRIN, PANNEAU ET TABLETTE JUSQU'A 8 mm

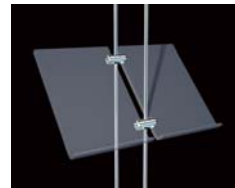
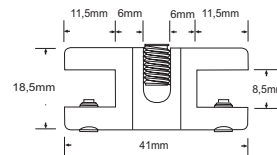
SWIVEL LECTURN, PANEL AND SHELF SUPPORT FOR UP TO 8 mm



R6601

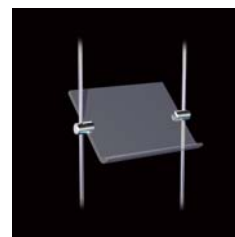
SUPPORT DOUBLE ORIENTABLE POUR LUTRIN, PANNEAU ET TABLETTE JUSQU'A 8 mm

TWIN SWIVEL LECTURN, PANEL AND SHELF SUPPORT FOR UP TO 8 mm



Pour bloquer l'orientation, supprimer la bague en laiton.

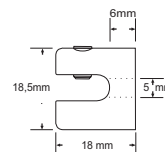
To prevent the rotation of the support, remove the brass ring.



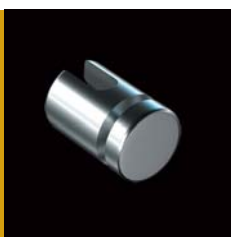
R6400

SUPPORT DE CADRE

FRAME SUPPORT



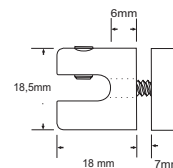
de 4 à 6 mm



R6407

SUPPORT POUR PANNEAU PERCE / PERÇAGE Ø 5 mm

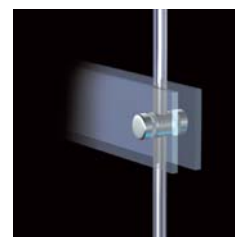
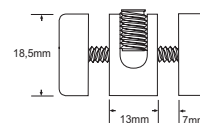
PIERCED PANEL SUPPORT / 5 mm Ø HOLE FIX



R6409

SUPPORT DOUBLE POUR PANNEAU PERCE / PERÇAGE Ø 5 mm

TWIN PIERCED PANEL SUPPORT / 5 mm Ø HOLE FIX



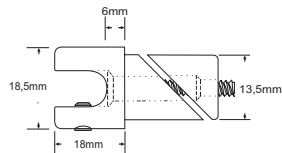
> TIGE 6 MM / 6 MM ROD COMPONENTS



R6404

TUBE HORIZONTAL & 2 SUPPORTS L. 1 MÈTRE
 - Tube Ø 16 mm
 - Finition Aluminium anodisé

HORIZONTAL TUBE & 2 SUPPORTS / L. 1 METRE
 - 16 mm Ø tube
 - Anodized Aluminium finish



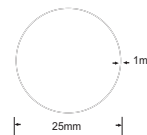
Autres dimensions : nous consulter / Other dimensions : consult us



R6410

BARRE PENDERIE / 1 MÈTRE
 - Tube Ø 25 mm / 2 bagues d'arrêt / 2 embouts de finition
 - Finition Acier chromé

HANGING RAIL / L. 1 METRE
 - 25 mm Ø tube / 2 cable-grips / 2 finishing caps
 - Steel chrome finish



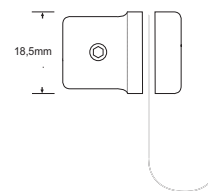
Autres dimensions : nous consulter / Other dimensions : consult us



R6403

SUPPORT CROCHET INOX

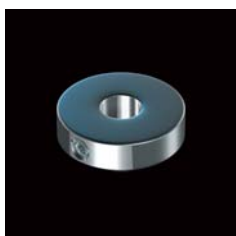
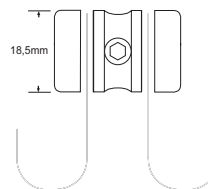
HOOK SUPPORT



R6408

SUPPORT DOUBLE CROCHET INOX

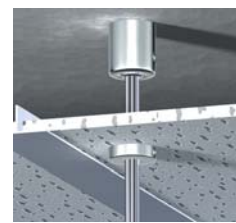
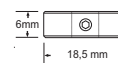
TWIN HOOK SUPPORT



R6712

DISQUE CACHE-PLAFOND

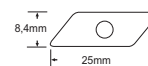
CEILING SHIELD



C1710

FIXATION POUR RAIL (M 4)

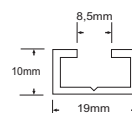
RAIL SUPPORT (M 4)



C1711

RAIL POUR FIXATION SOL-PLAFOND (2 MÈTRES)
 - Finition Aluminium anodisé

FLOOR / CEILING FIXING RAIL (2 METRES)
 - Anodized Aluminium finish



Pour implantation modulable / For modular set up