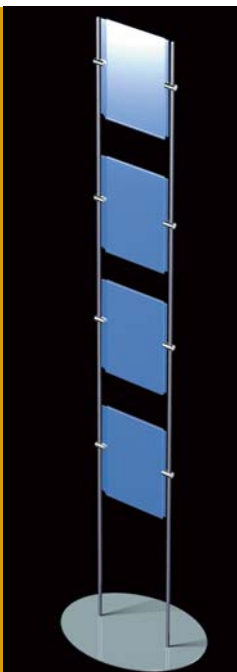


2 metres

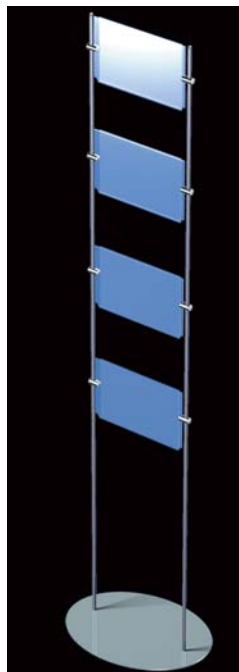


TA200/201/US

- TOTEM 2 MÈTRES - VERTICAL 201/US
- Qté 4 Tiges inoxydable / L. 1 M / Ø 10 mm
 - Qté 1 Platine gris galet
 - Qté 4 Pochettes porte-affiche Vertical 201/us
 - Qté 8 Supports panneau jusqu'à 6 mm

2 METRES TOTEM - PORTRAIT 201/US

- Qty 4 Stainless steel rods /1 M /10 mm Ø
- Qty 1 Grey plate
- Qty 4 Vertical poster holders 201/US
- Qty 8 Panel supports for up to 6 mm

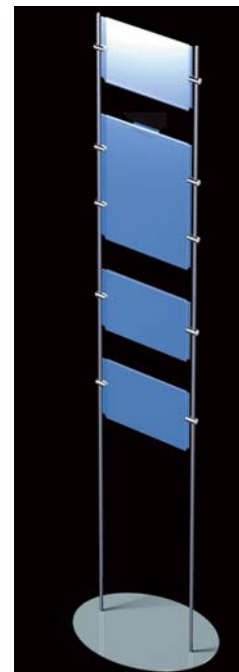


TA200/304/US

- TOTEM 2 MÈTRES - HORIZONTAL 304/US
- Qté 4 Tiges inoxydable / L. 1 M / Ø 10 mm
 - Qté 1 Platine gris galet
 - Qté 4 Pochettes porte-affiche Horizontal 304/US
 - Qté 8 Supports panneau jusqu'à 6 mm

2 METRES TOTEM - LANDSCAPE 304/US

- Qty 4 Stainless steel rods /1 M /10 mm Ø
- Qty 1 Grey plate
- Qty 4 Horizontal poster holders 304/US
- Qty 8 Panel supports for up to 6 mm

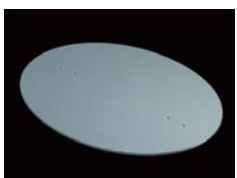


TA200/M/US

- TOTEM 2 MÈTRES - MIXTE
- Qté 4 Tiges inoxydable / L. 1 M / Ø 10 mm
 - Qté 1 Platine gris galet
 - Qté 3 Pochettes porte-affiche H 304/US
 - Qté 1 Pochette porte-affiche V202/US
 - Qté 10 Supports panneau jusqu'à 6 mm

2 METRES TOTEM - MIXED

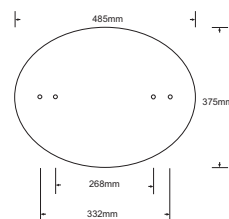
- Qty 4 Stainless steel rods /1 M /10 mm Ø
- Qty 1 Grey plate
- Qty 3 Horizontal poster holders 304/US
- Qty 1 Vertical poster holder 202/US
- Qty 10 Panel supports for up to 6 mm



PLA01

PLATINE
- Finition epoxy gris galet
- Epaisseur 4 mm

PLATE
- Grey epoxy finish
- 4 mm thickness



R0500

L. 0,5 M / TIGE INOXYDABLE
Ø 10 mm - 1 Bout arrondi

L. 0,5 M / FINISHING STAINLESS STEEL ROD
10 mm Ø - 1 Rounded end

R0501

L. 1 M / TIGE INOXYDABLE
Ø 10 mm - Filetée et taraudée

L. 1 M / STAINLESS STEEL ROD
10 mm Ø - Threaded ends

R0502

L. 1,5 M / TIGE INOXYDABLE
Ø 10 mm - Filetée et taraudée

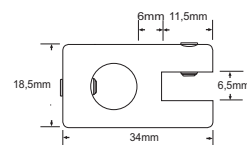
L. 1,5 M / STAINLESS STEEL ROD
10 mm Ø - Threaded ends



R0201

SUPPORT POUR PANNEAU JUSQU'À 6 mm

PANEL SUPPORT FOR UP TO 6 mm

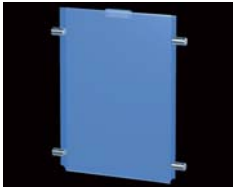




POCHETTE PORTE-AFFICHE
 - Chants polis / Epaisseur 3 mm
 - 2 supports

POSTER HOLDER
 - Polished edge / 3 mm thickness
 - 2 supports

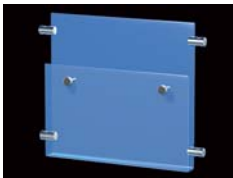
FORMAT / SIZE	DIMENSION	CODE
VERTICAL / PORTRAIT	(W. 216 X H. 280 MM) (246 MM)	TA201/US
HORIZONTAL / LANDSCAPE	(W. 216 X H. 280 MM) (310 MM)	TA304/US



POCHETTE PORTE-AFFICHE
 - Chants polis / Epaisseur 3 mm
 - Pince plexi
 - 4 supports

POSTER HOLDER
 - Polished edge / 3 mm thickness
 - Poster holder clamp
 - 4 supports

FORMAT / SIZE	DIMENSION	CODE
VERTICAL / PORTRAIT	(W. 280 X H. 430 MM) (310 MM)	TA202/US



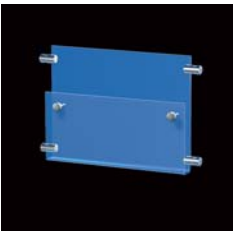
TA501/US

BAC DISTRIBUTEUR 1 BAC POUR DEPLIANTS VERTICAL
 - Dimension (L 240 x H 300 x 30 mm)
 - Compatible avec PORTE - AFFICHE VERTICAL 201 /US

PORTRAIT FOLDER DISTRIBUTOR
 - Dimension (L. 240 x H. 300 x 30 mm)
 - Compatible with PORTRAIT POSTER HOLDER 201/US

BAC DISTRIBUTEUR
 - Epaisseur 3 mm
 - 4 supports

FOLDER DISTRIBUTOR
 - 3 mm thickness
 - 4 supports



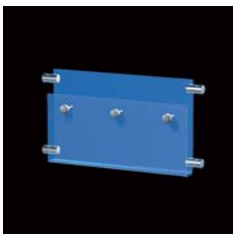
TA502/US

BAC DISTRIBUTEUR 1 BAC POUR DEPLIANTS HORIZONTAL
 - Dimension (L 327 x H 300 x 30 mm)
 - Compatible avec PORTE - AFFICHE 202/US ET 304/US

LANDSCAPE FOLDER DISTRIBUTOR
 - Dimension (L. 327 x H. 300 x 30 mm)
 - Compatible with 202/US AND 304/US POSTER HOLDER

BAC DISTRIBUTEUR
 - Epaisseur 3 mm
 - 4 supports

FOLDER DISTRIBUTOR
 - 3 mm thickness
 - 4 supports



TA503/US

BAC DISTRIBUTEUR 2 BACS POUR DEPLIANTS 1/3 VERTICAL
 - Dimension (L 327 x H 210 x 30 mm)
 - Compatible avec PORTE - AFFICHE 202/US ET 304/US

1/3 PORTRAIT TWIN FOLDER DISTRIBUTOR
 - Dimension (L. 327 x H. 210 x 30 mm)
 - Compatible with 202/US AND 304/US POSTER HOLDER

BAC DISTRIBUTEUR
 - Epaisseur 3 mm
 - 4 supports

FOLDER DISTRIBUTOR
 - 3 mm thickness
 - 4 supports



Compatibles gamme Tige Ø 10 mm
 Compatible with 10 mm Ø rod components

1,5 metres



TA150/501/US

TOTEM 1,5 MÈTRE - BAC VERTICAL

- Qté 2 Tiges inoxydables / L. 1 M / Ø 10 mm
- Qté 2 Tiges inoxydables / L. 0,5 M / Ø 10 mm
- Qté 1 Platine gris galet
- Qté 1 Pochette porte-affiche Vertical 201/US
- Qté 1 Bac distributeur pour dépliants Vertical
- Qté 6 Supports panneau jusqu'à 6 mm

1,5 M. TOTEM - FOLDER DISTRIBUTOR PORTRAIT

- Qty 2 Stainless steel rods / 1 M / 10 mm Ø
- Qty 2 Stainless steel rods / 0,5 M / 10 mm Ø
- Qty 1 Grey plate
- Qty 1 Portrait poster holder 201/US
- Qty 1 Portrait folder distributor
- Qty 6 Panel supports for up to 6 mm



TA150/502/US

TOTEM 1,5 MÈTRE - BAC HORIZONTAL

- Qté 2 Tiges inoxydables / L. 1 M / Ø 10 mm
- Qté 2 Tiges inoxydables / L. 0,5 M / Ø 10 mm
- Qté 1 Platine gris galet
- Qté 1 Pochette porte-affiche Vertical 202/US
- Qté 1 Bac distributeur pour dépliants Horizontal
- Qté 8 Supports panneau jusqu'à 6 mm

1,5 M. TOTEM - FOLDER DISTRIBUTOR LANDSCAPE

- Qty 2 Stainless steel rods / 1 M / 10 mm Ø
- Qty 2 Stainless steel rods / 0,5 M / 10 mm Ø
- Qty 1 Grey plate
- Qty 1 Portrait poster holder 202/US
- Qty 1 Landscape folder distributor
- Qty 8 Panel supports for up to 6 mm



TA150/503/US

TOTEM 1,5 MÈTRE - BAC 1/3 VERTICAL

- Qté 2 Tiges inoxydables / L. 1 M / Ø 10 mm
- Qté 2 Tiges inoxydables / L. 0,5 M / Ø 10 mm
- Qté 1 Platine gris galet
- Qté 1 Pochette porte-affiche Vertical 202/US
- Qté 1 Bac distributeur pour dépliants 1/3 de V
- Qté 8 Supports panneau jusqu'à 6 mm

1,5 M TOTEM FOLDER DISTRIB. 1/3 PORTRAIT

- Qty 2 Stainless steel rods / 1 M / 10 mm Ø
- Qty 2 Stainless steel rods / 0,5 M / 10 mm Ø
- Qty 1 Grey plate
- Qty 1 Portrait poster holder 202/US
- Qty 1 1/3 Portrait folder distributor
- Qty 8 Panel supports for up to 6 mm